



Welcome to the 38th Season of Music at Leamington Hastings

Dear Music Lover,

It is a pleasure to be writing to you about our concerts in 2009 which begin in May, I hope that you will like the new programme. The piano features prominently this year in four out of the six concerts even though we have only one actual piano recital. The Schubert Ensemble forms a piano quintet in June, and later the focus will be on the equal partnerships of clarinet & piano and violin & piano in the autumn.

The May concert is given by Ashley Wass whom I first heard at the Malvern Music club three years ago. Since then I have watched him making waves in the music world and this year he appeared at the BBC Proms to critical acclaim.

In June, we welcome the Schubert Ensemble for the first time. It is one of the world's finest and most experienced chamber groups and, unusually, is a full-time piano/strings ensemble. It celebrated its 25th Anniversary in 2008.

The Yehudi Menuhin School Orchestra returns here in July and will I feel sure enthral us yet again. These young musicians are completely immersed in their music and communicate with intensity, enthusiasm and high artistry. It is uplifting to hear such talent drawn out and inspired by their conductor Malcolm Singer – and later when the music is done, to find that individually the students are delightfully unassuming and charming teenagers. This year we have had to make an exception for the YMS and move the concert to a SUNDAY. The orchestra is making a major appearance in London on the Friday night and needs a clear day to recover from that.

In September Emma Johnson and Leon McCawley make a welcome return. Two such great performers as these will create a lot of electricity and some wonderful music. Their recital starts with 'Suite for Emma' by John Dankworth, and after the interval Leon will play a dreamy piano solo.

Alina Ibragimova, whom many will remember from her days at the Yehudi Menuhin School, is now at 23 a fast rising soloist. This year she is performing and recording all the Beethoven violin and piano sonatas and it will be a rare treat to hear one of her all-Beethoven recitals. Cédric Tiberghien is her contemporary, and a dynamic French pianist.

Then comes Christmas, and a superb choir - the Tallis Chamber Choir. It is new to Leamington Hastings, but very well-established in the UK. Directed by Philip Simms it has drawn much critical praise.

As I sit writing this brochure at the beginning of freezing February my focus is also on 2010 and the musicians we might invite to perform here. Quite a lot of thinking and research has to go on at this time of year so that proposals can be discussed with our Patrons and agreement

reached about next years' programme early in the current season. Their interest and support has been a great encouragement and pleasure.

Peter and I are grateful to David Potts, a Trustee, who is taking over full responsibility for seat booking and finance this year: Last year he successfully commissioned the new computerised booking system, and we believe we had almost no problems with what can be a very tricky exercise, even for national venues. We congratulate him. There are many links in the chain of activities leading up to these concerts, and by 2010 we hope to involve more Trustees, Patrons and enthusiasts in other aspects of this enterprise.

I would like to give special thanks to some of the people who have contributed so much to the smooth running and success of the concerts:

First of all to Brenda Law, who has just retired from almost a life-time of organising the beautiful flower arrangements which have so enhanced the church on concert nights.

Then to Tamsin Ogilvie, of Nuts and Bolts Design, who has given her time designing our elegant brochures and programmes.

Thirdly to Valerie and David Smith, who are constantly providing attractive photographs for our publications as well as helping in other ways.

Thanks too, to:

Fellow Trustees: David Potts, Heather Hemelryk and Karen Hatch, and also Ann Coulson for sharing in the management of concerts.

Sue and John Middleton for mulled wine, strawberries and more.

Ray Law for always being there to help and advise.

Martin Jackson for programme notes.

David Thornton of Russell Acott for sponsorship of our pianos.

Peter Reeve for updating our website.

Adrian Allen our auditor, and organiser of the car parking team, and Zinnia Allen, Barry Hutchinson, Lars Maynard, Steve Gee, Nick Turner, David Turner for car parking.

Wallace McCurdie, David & Gordon Smith & Martin Greenaway for outside lighting and setting up the church.

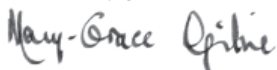
Rachel Hemelryk for page turning.

Doreen Wadland, Jeannie Williamson, Lorraine Dimpleby and Mary Fields for flower arranging.

Gill Ayers, Gwyn Davy, Zinnia Allen, Freda Slater, Rose Hull, Di Weaver, Joan Elliott for their help on many fronts.

One of the rewards of organising these concerts is the pleasure of working with such a helpful and friendly team.

With every good wish for 2009, and I hope you enjoy the music,



Mary-Grace Ogilvie

Concert 1

May 16th / Saturday 7.30pm

Ashley Wass

"magnificent" and "electrifying"
in Vaughan Williams piano concerto at
the BBC Proms 2008

"...Wass is truly outstanding."
The Pianist

*"This gifted young pianist possesses a rock-solid
technique and striking keyboard finesse..."*
Gramophone

Described by Gramophone Magazine
as a *"thoroughbred who possesses the enviable
gift to turn almost anything he plays into pure
gold"*. Ashley Wass is firmly established
as one of the leading performers of
his generation. Only the second British
pianist in 20 years to reach the finals of
the Leeds Piano Competition (2000), he
is also the only British pianist to have won
First prize at the London International
Piano Competition (1997).

He made his debut recording in 1999
with a solo recital disc of works by Cesar
Franck for Naxos. Diapason commented:
*"The quality and height of inspiration of his
playing makes this disc a revelation."*

Wass has given recitals at most of the
UK's major venues including Wigmore
Hall, Symphony Hall, Purcell Room,
Queen Elizabeth Hall, Royal Festival
Hall and has appeared at the festivals
of Cheltenham, Brighton and the City
of London. His concerto performances
have included Beethoven and Brahms
with the Philharmonia, Mendelssohn and
Beethoven with the Orchestre National
de Lille and Mozart with the Vienna
Chamber Orchestra at the Vienna
Konzerthaus. He has worked with Sir
Simon Rattle and the CBSO, the BBC
Symphony Orchestra, Sinfonia Viva and
the London Mozart Players.



Ashley Wass (piano)

Beethoven	Sonata in E flat Op.31 No.3
Chopin	Fantasia in F minor
Chopin	Second Scherzo
Liszt	Three Petrarch Sonnets Nos. 47, 104, 123
Franck	Prelude, Chorale and Fugue

Strawberries and cream if available, (or a glass of
wine or juice if no strawberries) will be served in
a local garden during the interval.

Concert 2

June 13th / Saturday 7.30pm



The Schubert Ensemble

William Howard (piano)

Simon Blendis (violin)

Jonathan Morton (violin)

Douglas Paterson (viola)

Jane Salmon (cello)

Mendelssohn Piano Quartet in F minor Op.2

Johnathan Dove Piano Quintet

Elgar Piano Quintet in A minor

Strawberries and cream will be served in a local garden during the interval.

"The Schubert Ensemble are a marvellously gifted ensemble, imparting their energy and lyricism to anything to which they turn their expert hands"
Classic FM Magazine

The Schubert Ensemble

"...the balance, clarity and tone were perfectly realised, both by performers and by this remarkable new hall (Kings Place, London): outstanding in every respect"

"...a vibrant virtuoso performance..."

Los Angeles Times

"...one of the finest piano quartets performing today..."

Classic CD

After 26 years at the forefront of British chamber music, the Schubert Ensemble is firmly established as one of the world's leading exponents of chamber music for piano and strings. Regularly giving over 50 concerts a year, the Ensemble has performed in 40 different countries. In the last eighteen months it has played in major concert halls in Europe and North America, including London's Wigmore Hall, Amsterdam's Concertgebouw Hall, Oslo's Konserthus and for the Coleman Chamber Series in California, and has given a four-concert Brahms series for BBC Radio3 at St George's Bristol.

Last year the Ensemble celebrated its 25th Anniversary. The year began with a concert at the Barbican and a tour of the USA. It continued with a performance of six recent ensemble commissions at the South Bank. The Ensemble gave two further 25th Anniversary concerts at Wigmore Hall in November, concerts in Luxemburg and Turkey, and a four-concert Faure series at St Georges Bristol, which has recently been broadcast on BBC Radio 3. Plans for 2009 include the world premiere of a piano quartet by Johnathan Dove, several festival performances and a return visits to Moravia, Holland, Canada and the USA. They will also continue their residency at the Birmingham Conservatoire.

Concert 3

July 12th / SUNDAY 7.30pm

Yehudi Menuhin School Orchestra

After twenty one years as Headmaster of the YMS, Nicholas Chisholm writes in the Newsletter for the Autumn term "If I were asked what has been the school's greatest moment over the last twenty one years, I would have to answer – the Opening of the Menuhin Hall with Slava Rostropovich conducting the School Orchestra. At last the school has a performing space worthy of an institution with an international reputation, and what a change this has brought to levels of performance."

Performance is part of life at the school and ranges from full recitals by individual pupils, to concerto performances, chamber music groups and orchestral concerts. Nicholas Chisholm refers to the "backdrop of an ever increasing number of engagements which the pupils take completely in their stride" and says "it is important to challenge gifted young people to set themselves ever higher targets and vital to provide the support they need".

Pupils are continually inspired by the visits of some of the world's greatest musicians – Andras Schiff, John Lill, Emma Johnson, Raphael Wallfisch, last term alone. These musicians as well as making music, always give generously of their time to students. Academically the highest standards are expected and achieved, the school received outstanding reports after two inspections last year. In addition sport, drama, charitable work and many other activities all have a place in pupils' lives at the YMS.



Yehudi Menuhin School Orchestra

The programme will include:

Bartok	Divertimento
Vaughan Williams	Concerto Academico
Soloist	Ben Baker
Noam Sheriff	Canarian Vespers for viola and strings
Soloist	Aisha Syed

Strawberries and cream will be served in a local garden during the interval.

Concert 4

September 26th / Saturday 7.30pm



Emma Johnson MBE (clarinet) Leon McCawley (piano)

John Dankworth	Suite for Emma
Brahms	Sonata No.1 in F minor Op.120
Poulenc	Sonata for Clarinet and Piano
Verdi/Lovreglio	Concert Fantasy on Themes from La Traviata

Piano Solo:

Messiaen	Le Baiser de l'enfant Jesus
----------	-----------------------------

A glass of wine or fruit juice will be served to you
in your seats during the interval.

"...Johnson is superb..."
Sunday Times

"McCawley... a master of tone and articulation"
Philadelphia Inquirer July 2008

"his was an exceptional performance"
York Evening Press May 2008

Emma Johnson (clarinet)

"a classical music superstar"
Clarinet & Saxophone Magazine

Emma Johnson is one of the few clarinetists to have established an international career as a soloist. In Britain she has achieved particular popularity – her two recent discs on the Universal label, 'Voyage' and 'The Mozart Album', spent many weeks at the top of the Classical Charts.

One of the chief inspirations for Emma's music making is listening to great singers. When she plays the clarinet she tries to emulate the expressive power of the human voice. Her goal has been to get better acceptance for the clarinet as a solo classical instrument, and she is known for drawing upon a wide range of musical expression in her concerts.

Emma has appeared as soloist with many leading orchestras including the London Symphony, Philharmonia, the Hallé, Tokyo Philharmonic, Salzburg Camerata and Netherlands Philharmonic, in repertoire which includes over forty concertos. A new development in her career has seen her being invited to direct from the clarinet and also to conduct.

Leon McCawley (piano)

Leon McCawley is firmly established as one of England's finest young pianists. Championing core classical repertoire together with the unknown, McCawley's CD releases have been impressing critics far and wide. Awarded a Diapason d'Or in March 2007, his recording for Avie Records of Mozart's complete piano sonatas is no exception. *"This superb set should propel McCawley towards the greater prominence he deserves"* The Observer.

Leon is frequently heard as a concerto soloist with many leading British orchestras and has appeared at the BBC Proms several times. In July 08 he returned to the Philadelphia Symphony with great acclaim for his Mann Music Centre debut.

Concert 5

October 10th / Saturday 7.30pm

Alina Ibragimova (violin)

The Times has written that Alina Ibragimova performs with “a mixture of total abandonment and total control that is in no way contradictory” and that she is “destined to be a force in the classical music firmament for decades to come”.

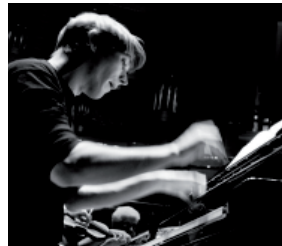
With repertoire encompassing baroque to contemporary works, Alina’s recent engagements have included her BBC Proms debut with the London Symphony Orchestra and Francois-Xavier Roth, Mendelssohn with the Philharmonia and Sir Charles Mackerras, Sibelius with the BBC Scottish Symphony and Osmo Vänskä, Prokofiev with the RSO Frankfurt and Yannick Nézet-Séguin, and Beethoven with the BBC Philharmonic and Gianandrea Noseda.

Born in Russia in 1985, Alina is a former pupil of the Moscow Gnesin and Yehudi Menuhin schools, and the Royal College of Music London.

Cédric Tigberghien (piano)

Tigberghien is one of the most exciting artists to emerge from France in recent years. He has just given his BBC Proms debut, and highlights among future concerto engagements include the Dresdner Philharmonie, Philharmoniker Hamburg, Gelders Orkest, RotterdamPhilharmonic, Hallé Orchestra, Sydney Symphonie, Tokyo Symphony, Malaysian Philharmonic, Orchestre National d’Isle de France and Orchestre de Paris.

Cédric is also a dedicated chamber musician and his regular partners include Alina Ibragimova (with whom he will present the complete Beethoven violin sonatas at the Wigmore Hall in 2009/10. Hyperion will release shortly his recording with Alina Ibragimova of the complete works by Szymanowski for violin and piano.



Alina Ibragimova (violin) Cédric Tigberghien (piano)

- Beethoven Sonata No.1 in D major Op.12/1
- Beethoven Sonata No. 4 in A minor Op.23
- Beethoven Sonata No.8 in G major Op.30/3
- Beethoven Sonata No.7 in C minor Op.30/2

A glass of wine or fruit juice will be served to you in your seats during the interval.

“The performance provided proof of why Ibragimova is fast becoming one of today’s most sought-after young virtuosos.”
The Strad, November 2008

“A wonderfully spirited performance. Tigberghien and the Hong Kong Sinfonietta... caught the emotional spectrum of the central set of variations. Tigberghien’s bravura drove the music to an impressive conclusion”

Concert 6

December 12th / Saturday 7.00pm



Tallis Chamber Choir

Director Philip Simms

Organist Antony Baldwin

A Christmas Programme, by members of the Tallis Chamber Choir, including music by:

Holst, Berlioz, Vaughan Williams, Britten, Howells, Tavener, Rutter, Matthias and Joubert.

Additionally, arrangements by Willcocks, Simms and Ledger.

During the interval a glass of hot mulled wine and festive refreshments will be served in church.

"...outstanding, a beautiful, accomplished and well balanced sound...an electrifying performance..."

The Gazetta Wyborcza/Wratislavia

"the excellent Tallis Chamber Choir.."

The Times/Barbican

"...absolute precision and focused tone of the Tallis Chamber Choir's singing"

New York Times

Tallis Chamber Choir

"radiant performance with the Tallis Chamber Choir..."

Guardian/Barbican

The Tallis Chamber Choir was founded in 1982 by Philip Simms and quickly established itself both in the UK and Europe as an excellent and versatile group of singers. The choir's title stems from Philip's long association with St Alphege Church, Greenwich, where the 16th century composer Thomas Tallis worked and is buried.

From its inception, TCC has had a special relationship with the English Chamber Orchestra, and they perform and record together regularly.

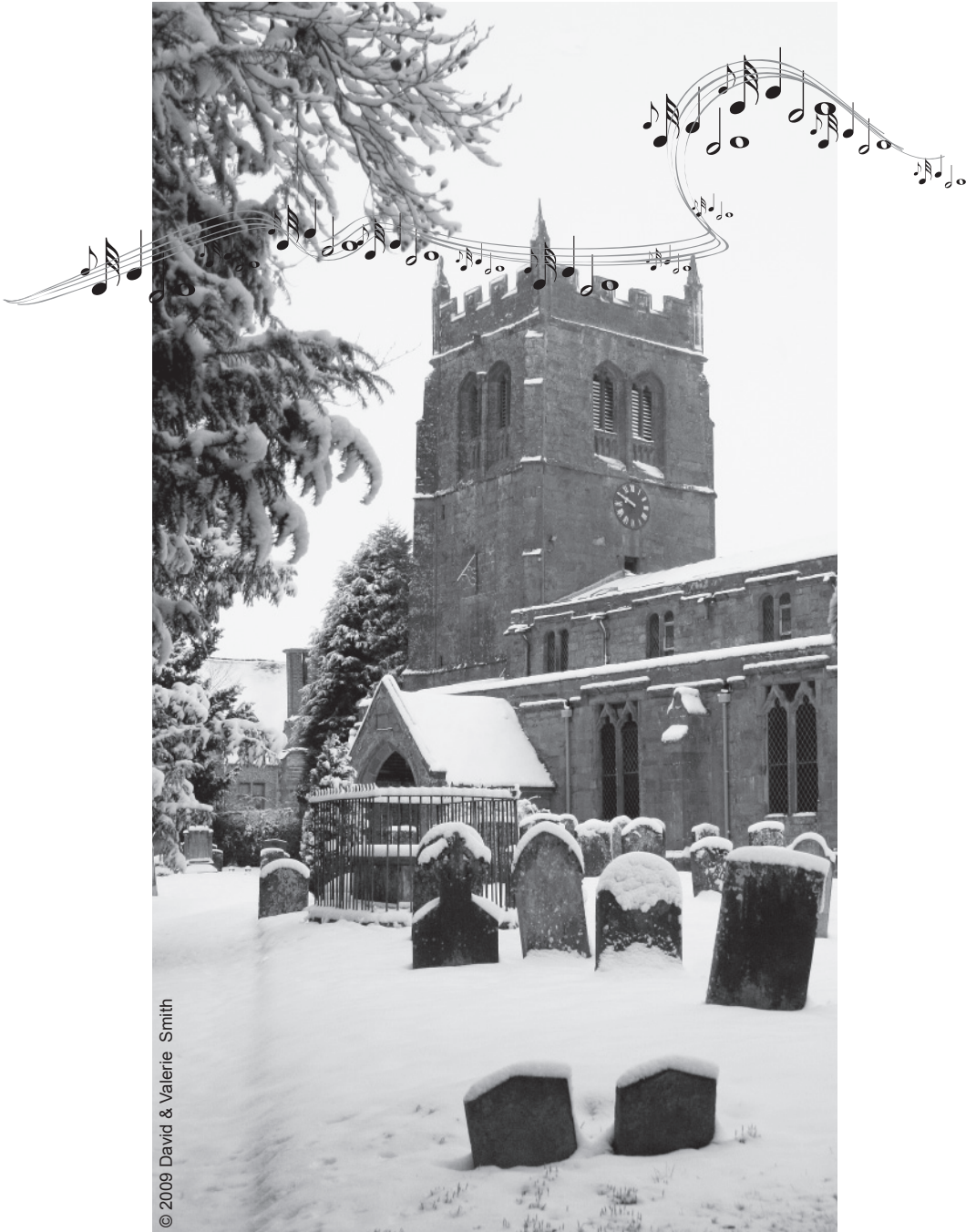
TCC can field from 8 to 60 singers, as appropriate, and enjoys a repertoire which encompasses music from the 12th to the 21st centuries, with orchestra and a cappella, operatic, sacred and secular. The choir has sung in several languages and in many different styles.

The choir has worked with many internationally acclaimed conductors including Ashkenasy, Bruggen, Harnoncourt, Hickox, Jarvi, Mackerras, Malgoire, Mehta, Menuhin, Paul Goodwin and Norrington.

Philip Simms

Philip Simms is a versatile conductor, chorus master and instrumentalist, with an unusually varied musical background. Educated at the Royal Academy of Music, he received tuition in conducting from Sir Adrian Boult, Sir Colin Davis, Antal Dorati, George Hurst and Sir Charles Mackerras.

Philip has conducted in all London's concert halls and throughout the UK with orchestras such as the LSO, London Mozart Players, Manchester Camerata, Trinity College of Music, the London Concert Orchestra and the Orchestra of the Millennium.



© 2009 David & Valerie Smith

Donations and Gift Aid

Music at Leamington Hastings is a charity and the donation element of the ticket price is essential to cover cost, though we are legally obliged to inform you that it is optional.

We can also claim tax-relief on donations made. So please, if this applies to you, complete the relevant section of the order form. This also applies if you book by phone. You only need to fill the form in once, as long as you keep us informed of change of address and tell us if you cease to pay enough tax in a year to cover your donation. It is important that you do inform us if this is the case.

First Time Visitors

For those of you who are visiting us for the first time: Welcome to Leamington Hastings.

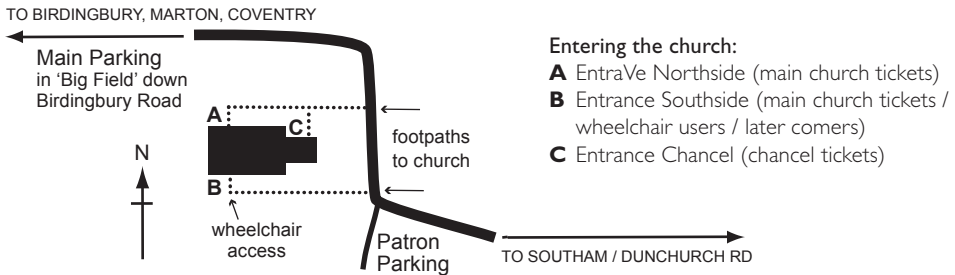
Booking Seats

You can order using the form in this brochure (or print one from our website). You can also phone and book using a credit card or debit card. Often, if you have particular requirements, it's best to phone. Some seats are better than others, and there is usually a rush to get ones in the front and the centre. Other than when there are singers, the chancel is considered by many as an excellent place to sit. The acoustics are good, and since most ensembles often face each other, and pianists sit side-on, the view of the artist is as good from that side as the from the Nave.

Many of our seats are booked within a few weeks of the brochure going out, so please try to book early. We do not normally send out tickets, but ask you to retain your acknowledgement letter instead. If you would like separate tickets to pass on to guests, please mention this on the phone or in the booking form.

Getting to the Church

Once you get to the village of Leamington Hastings, the church is located as shown below.



Main Parking

This is off-road in a field. This is the country side so bring suitable footwear as the weather dictates. When it's very wet we do the best we can, but parking requires care.

Patron and Disabled Parking

This is closer to the church. It is a short walk, but the comments about bad weather still apply. You need a pass, a 'disabled' badge, or prior permission to park here.

Arriving in Time

There is a 5 minute walk from the car-park to the church. It is best to aim to park around 15 minutes before the concert starts. If you happen to be late, go to Door B, where there will be someone inside to help.

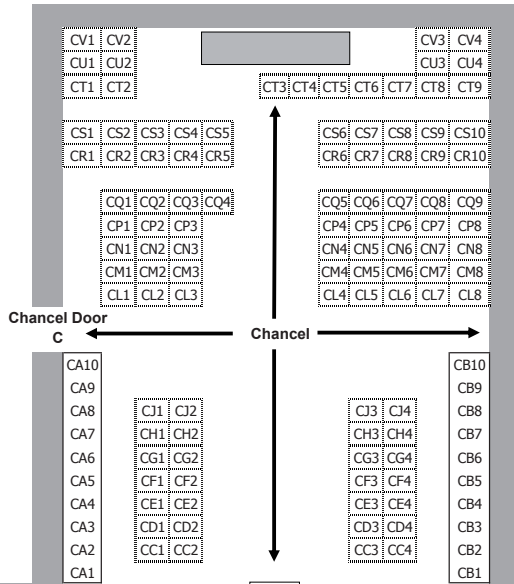
Intervals

Depending on the weather we go to a nearby garden, thanks to generous neighbours, or we stay in the church. There is always some refreshment provided by our volunteers - see each concert for details.

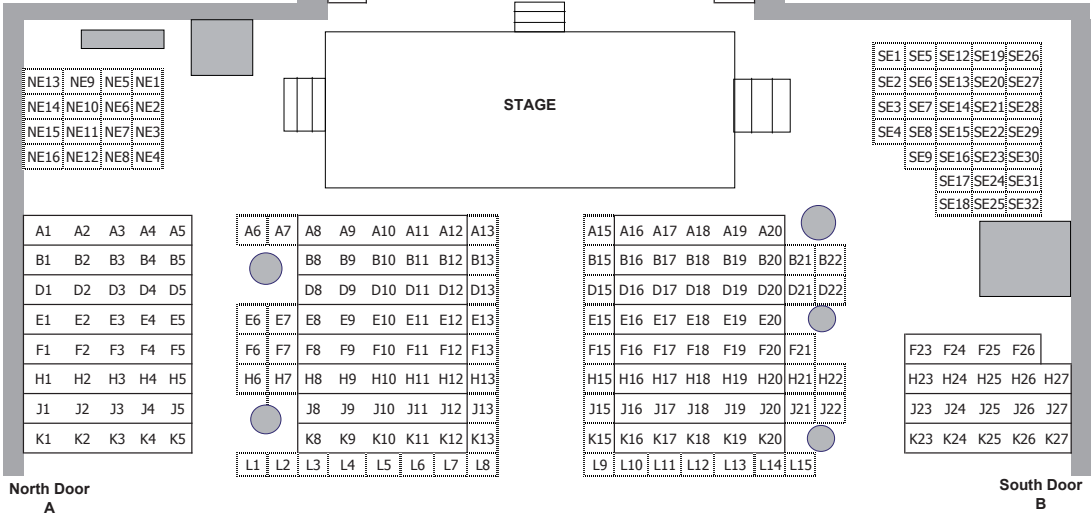


North

All Saints Church
Layout of Seats for Concerts



- = bench seating
- = plastic seat
- = pillar or other obstruction



Wheelchair Access

W.C.

Gallery - Up Spiral Stairs

Patrons of Music at Leamington Hastings

Registered Charity No 1121192

President John Lill CBE



We had another successful season in 2008. John Lill CBE contributed to two of our highlights; first by agreeing to become our honorary president, and secondly when he visited us in June and gave what many of those present believed was the finest piano recital they had ever heard. It was a spell-binding evening. John also attended a fund-raising party afterwards, and as usual proved a delightful guest and with your generosity we raised a tidy sum towards the Tower Appeal.

The numbers attending our concerts held up well, and we expect to make a further contribution towards the Tower Appeal, to start restoring the crumbling stonework at the top of the tower:

We enjoyed lively performances by the London Concertante and by Red Priest, both first time visitors here, and who we may see again. Return visits by Benjamin Grosvenor and by William Dazeley and Richard Peirson were well supported, and made big impressions. Ex Cathedra gave us their usual polished performance just before Christmas – the occasion being only marred by the atrocious weather. The new patrons car-park drainage system coped well for most of the year, but proved unequal to a prolonged and heavy 24 hour down-pour just before the concert. Everyone got into the car-park OK, but regrettably it was not so easy getting out. A number of people went home a bit late and a bit muddy. Apologies to all of them, and thank you for not complaining! We are now exploring the possibility of laying a plastic reinforcement mesh over the whole thing, to prevent wheels sinking in – just in case this extreme weather becomes a normal of UK life.

Once again we will be consulting with our Patrons about the 2010 programme, which is now being planned.

We would like to express our gratitude to all our patrons for their continuing support, including:

Dr & Mrs Backhouse

Mr & Mrs Alan Buckle

Mrs E J Burton

Mr & Mrs Peter Coulson

Miss Constance Elliott

Miss Helen Forster

Mr & Mrs Peter Galliford

Mrs K Gibson

Dr Sharon & Mr Hancock

Mrs S A Haswell

Mr & Mrs Roy Hatch

Mrs Helen Hoggarth

Miss M Houkkin

Sir Igor & Lady Judge

Mr & Mrs P Kander

Mr & Mrs Kenworthy-Browne

Mr & Mrs Ray Law

Mrs Molly Lodder

Mr Charles McLeod

Dr Christine O'Brien

Mr & Mrs Peter Ogilvie

Mr & Mrs Tom Pedrick

Mr & Mrs John Peirson

Mr & Mrs David Potts

Mr & Mrs Michael Raynor

Mr & Mrs John Richardson

Mr & Mrs David Smith

Mr Brian Southern

Mrs Hazel Steven

Mrs Mary Swainson

Mr & Mrs Robert Wakeford

Mr & Mrs P Watts

Mrs Di Weaver

Major Westby

Mr B W Young